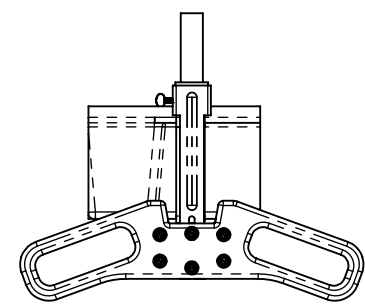
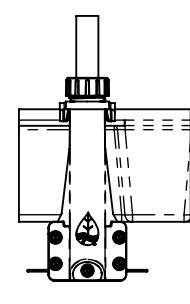


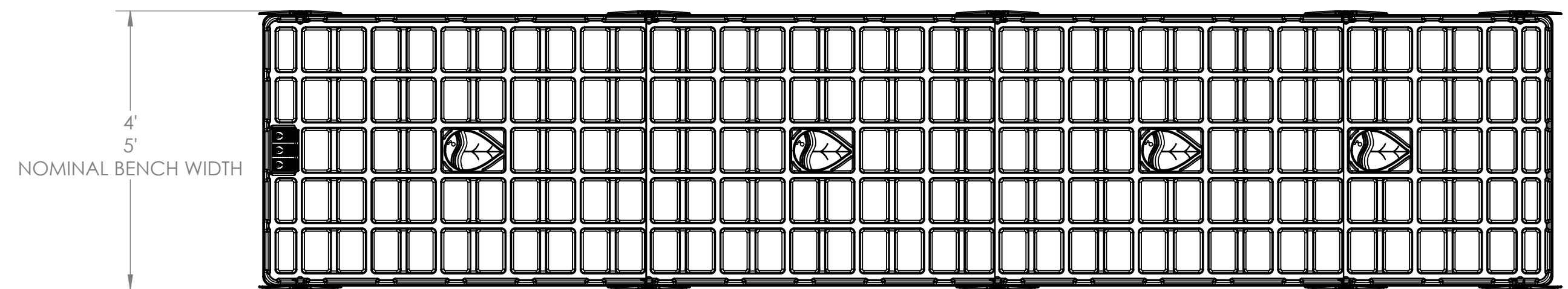
NOTES:
1. THIS DRAWING SHOWS A REPRESENTATIVE 4' WIDE BY 18' LONG BENCH.



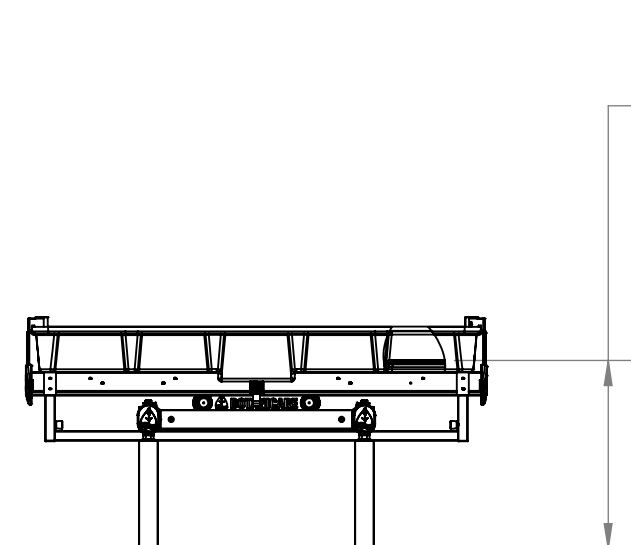
ORIGINAL TRELLIS
MOUNT (O)
1" EMT
3/4" PVC



TRILOCK TRELLIS
MOUNT (N)
1" EMT
3/4" PVC
3/4" EMT

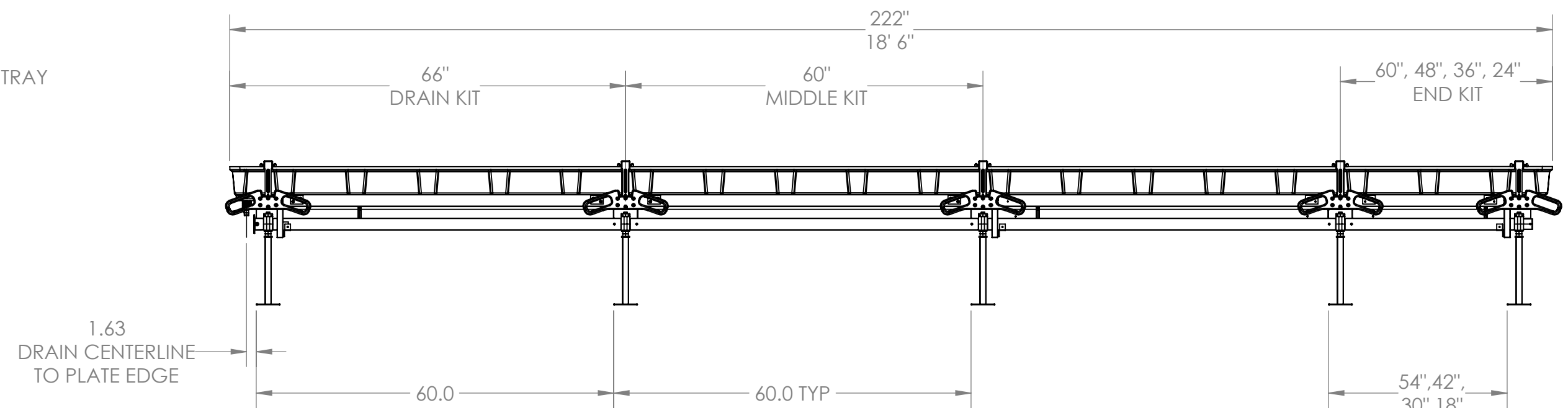


4' 5"
NOMINAL BENCH WIDTH

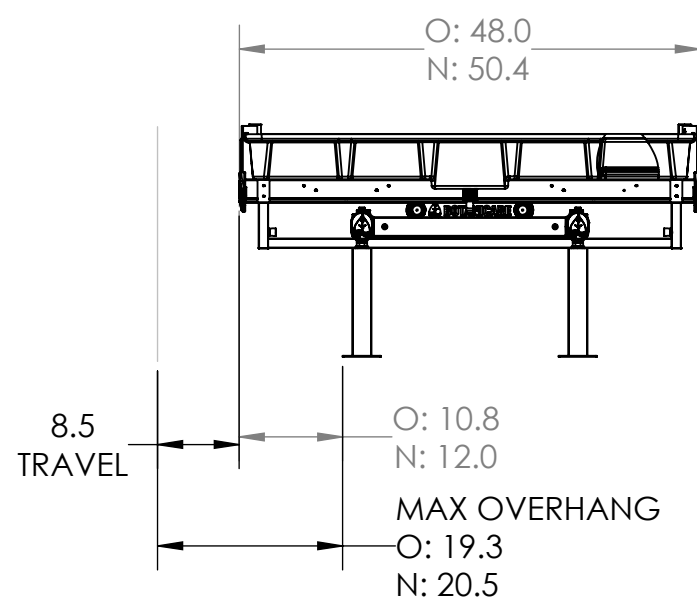


12"
20"
30"
NOMINAL BENCH HEIGHT
FLOOR TO INSIDE DECK OF TRAY

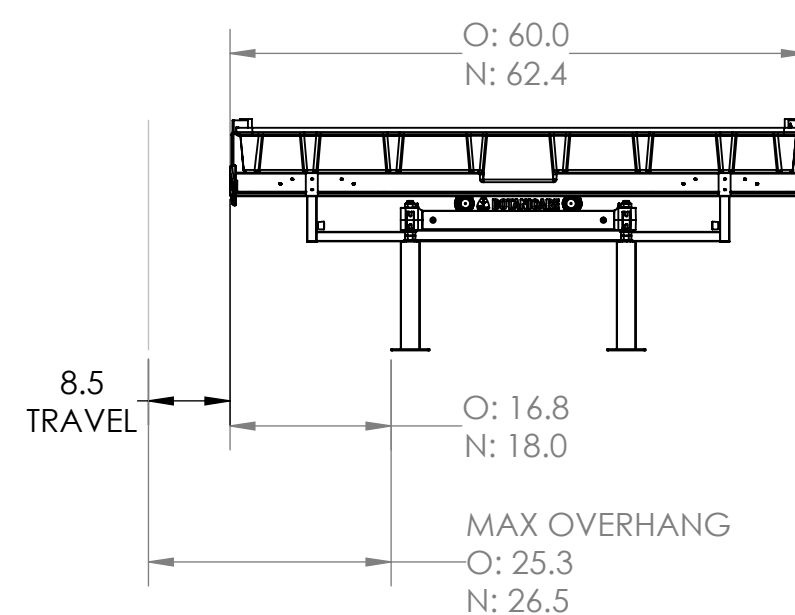
18.5
4' & 5' LEG SPACING



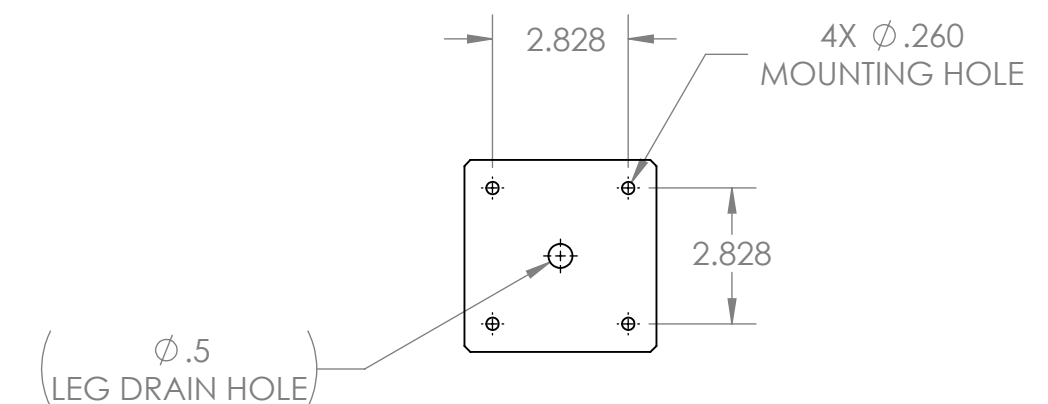
1.63
DRAIN CENTERLINE
TO PLATE EDGE



4' WIDE BENCH



5' WIDE BENCH



LEG MOUNTING PLATE
DETAILS



This document is not intended to be used for installation purposes.
We cannot cover all specific applications or anticipate all requirements.
All specifications are subject to change without notice.
HawthorneGC.com | Canada: HawthorneGC.ca

Determine layout distances

A. Drain Tray to Wall Spacing

Enter desired spacing here + 5 1/8" = **Distance A**

B. Left Side Tray to Wall Minimum Spacing
(When bench is slid towards the wall)

Enter desired minimal spacing here + = **Distance B**
4' bench add O: 19 1/4" N: 20 1/2"
5' bench add O: 25 1/4" N: 26 1/2"

C. Bench to Bench Spacing
(17" aisle minimum)

Enter desired aisle width here + = **Distance C**
4' bench to 4' bench spacing add O: 31" N: 33 3/8"
4' bench to 5' bench spacing add O: 37" N: 39 3/8"
5' bench to 5' bench spacing add O: 43" N: 45 3/8"

D. Distance "L" from Arch 1 leg mounting plate to the last arch mounting plate. Select from **Appendix B** based on the nominal bench length.

Distance L

- E. Distance A from the back wall; snap a chalk line along the back wall from left to right.
- F. Distance B from the left wall; snap a chalk line along the left wall from back to front.
- G. Distance C from the line created in step F, snap a parallel chalk line from back to front.
Repeat as necessary based on the number of benches in the room.

NOTE: Arches are nominally 60" from arch to arch. The last arch opposite the drain end is a short section. The short section can be 54", 42", 30" or 18" apart depending on the overall length of the bench.